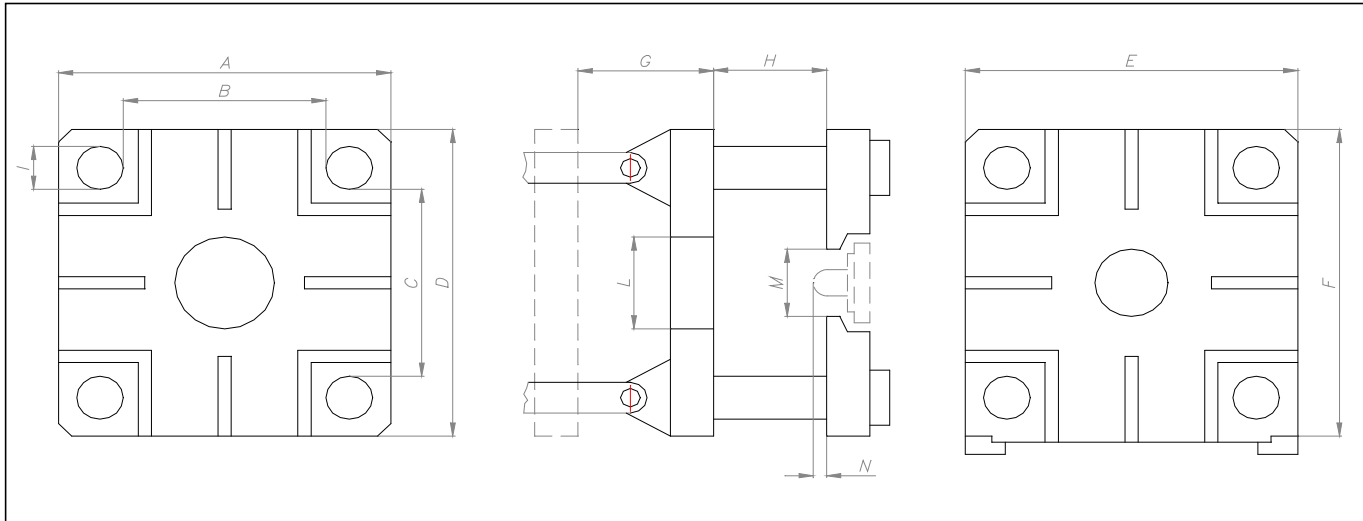


# EMGE INC PLASTIC INJECTION MACHINES INFORMATION SCHEME

**14.06.2019**



	MACHINE	MODEL	TONNAGE	GRAMMAGE	ORIGIN	A	B	C	D	E	F	G	H	I	M	L	N
1	RICO 350	1991	300	700	GERMANY	800	530	530	800	800	800	800	400	100	175	160	20
2	HASTEK BORCHE BT200V-1	2007	200	450	CHINA	750	510	510	750	750	750	465	180	80	100	100	45
3	HASTEK BORCHE BT150V-1	2008	150	320	CHINA	680	460	460	680	680	680	410	160	75	100	100	45
4	HASTEK BORCHE BT150V-1	2011	150	320	CHINA	680	460	460	680	680	680	410	160	75	100	100	45
5	HASTEK BORCHE BT120V-1	2007	120	225	CHINA	590	410	410	590	590	590	340	145	70	100	100	35
6	HASTEK BORCHE BT80-III	2019	80	153	CHINA	550	360	360	555	540	540	320	130	73-60			
7	ERAT 200/120	1994	100	200	TURKEY	560	350	230	460	560	500	300	140	60	125	70	20
8	İMBAT IPEM 200	1976	100	200	TURKEY	500	305	305	500	500	500	300	170	70	110	150	20
9	YELKENCİLER M135/S200	1996	100	200	TURKEY	490	325	325	490	490	525	320	110	55	100	100	20
10	NETZTAL 170/90	1994	90	200	SWITZERLAND	550	350	350	550	580	600	300	100	66	115	140	20
11	ARBURG 300 PR	1977	80	50	GERMANY	430	300	130	310	430	270	300	100	50	125	125	20
12	ARBURG 270/90/500	1988	50	50	GERMANY	400	270	270	400	400	400	400	100	45	125	125	20
13	ARBURG 270/210/500	1981	50	50	GERMANY	400	270	270	400	400	400	400	100	45	125	125	20
14	ARBURG 220/90/350	1980	35	50	GERMANY	340	220	220	340	340	340	400	100	45	100	100	20
15	ARBURG 221-55-250	1997	25	40	GERMANY	340	220	....	280	340	310	150	120	45	110	60	20
16	ARBURG 221-E-170	1992	25	40	GERMANY	340	220	....	280	340	310	150	120	45	110	60	20
17	DR. BOY VERTICAL 155/22	1993	15	30	GERMANY	400	250	....	240	420	270	150	200	40	100	80	20